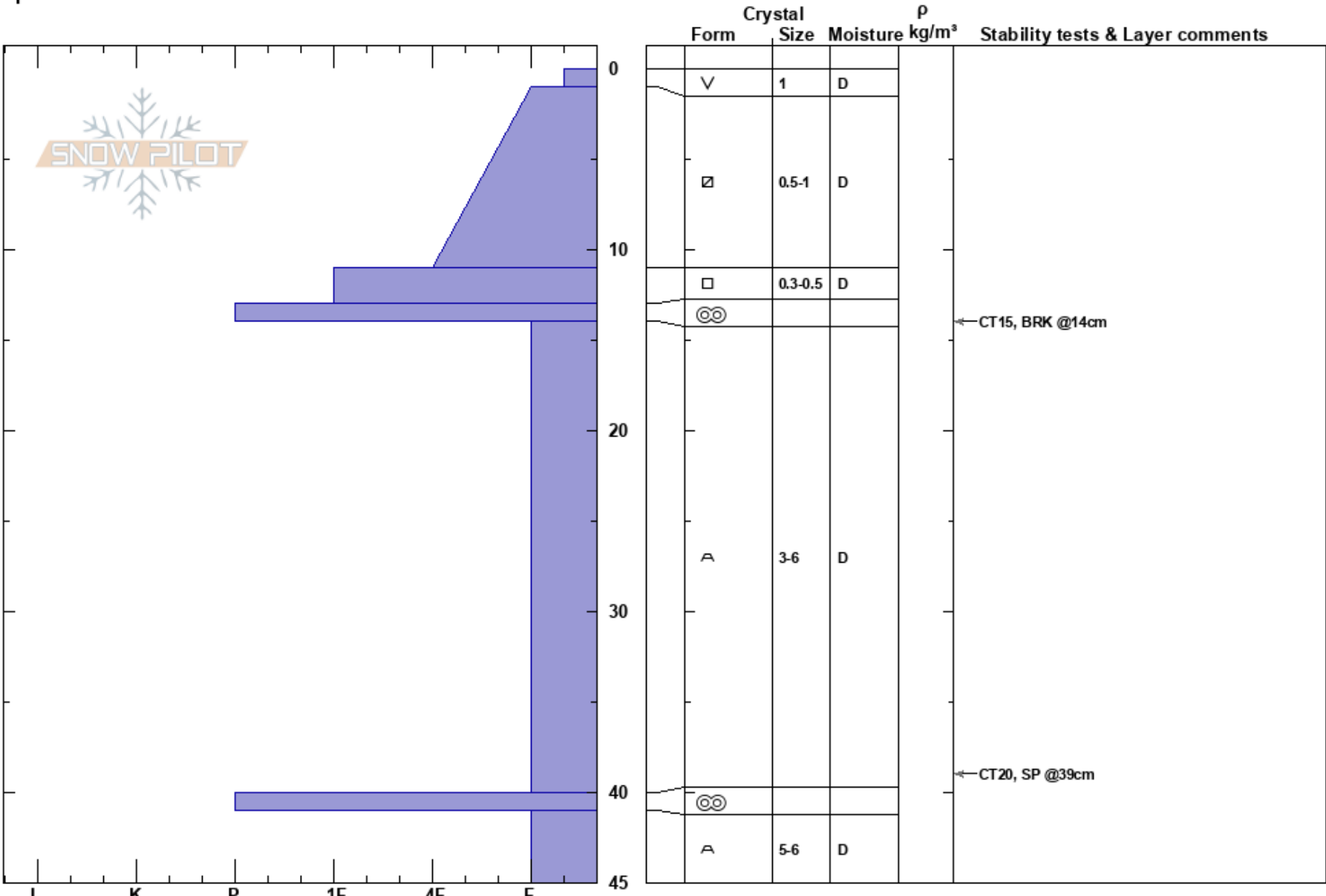


QUICK NW PROFILE
 Eastern Sierra Nevada
 CA
Elevation: 10000 ft
Aspect: NW
Specifics:

Sammy Rubin
 12/14/2023 - 2:00pm
Co-ord: 37.68317N, -119.06445W
Slope Angle: 15°
Wind Loading:

Stability:
Air Temperature: -0.5°C **HS:** 45
Sky Cover: BKN **PF:** 30 **Layer Notes:** 14-40cm: Problematic layer
Precipitation: NO
Wind: SW Light Breeze



Notes: We were running low on time, but came across a good location to dig a NW pit @ 10,000'. We had time for a quick pit, but were not able to complete a temp profile or an ECT.