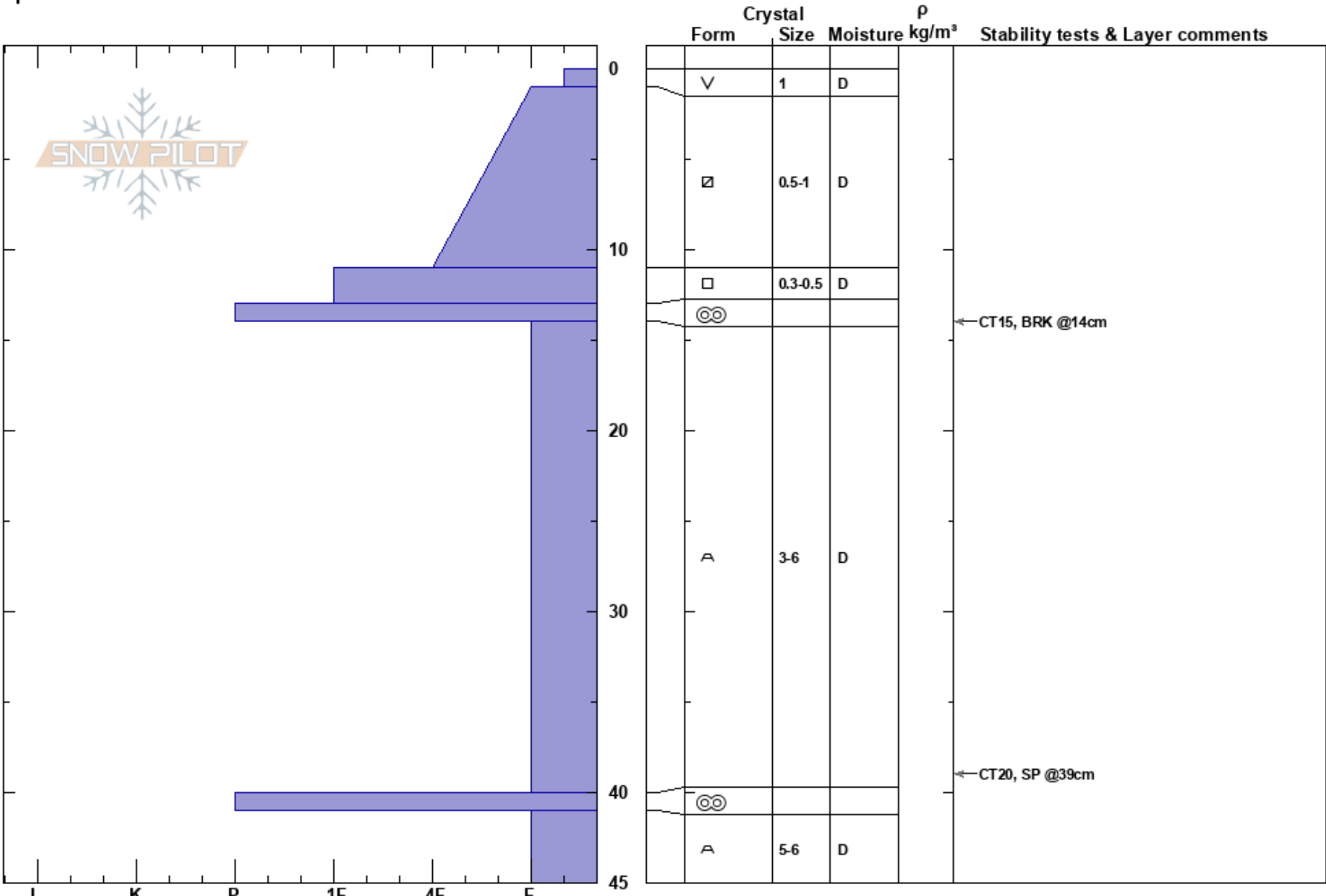


QUICK NW PROFILE  
 Eastern Sierra Nevada  
 CA  
**Elevation:** 10000 ft  
**Aspect:** NW  
**Specifics:**

Sammy Rubin  
 12/14/2023 - 2:00pm  
**Co-ord:** 37.68317N, -119.06445W  
**Slope Angle:** 15°  
**Wind Loading:**

**Stability:**  
**Air Temperature:** -0.5°C **HS:** 45  
**Sky Cover:** BKN **PF:** 30 **Layer Notes:** 14-40cm: Problematic layer  
**Precipitation:** NO  
**Wind:** SW Light Breeze



**Notes:** We were running low on time, but came across a good location to dig a NW pit @ 10,000'. We had time for a quick pit, but were not able to complete a temp profile or an ECT.