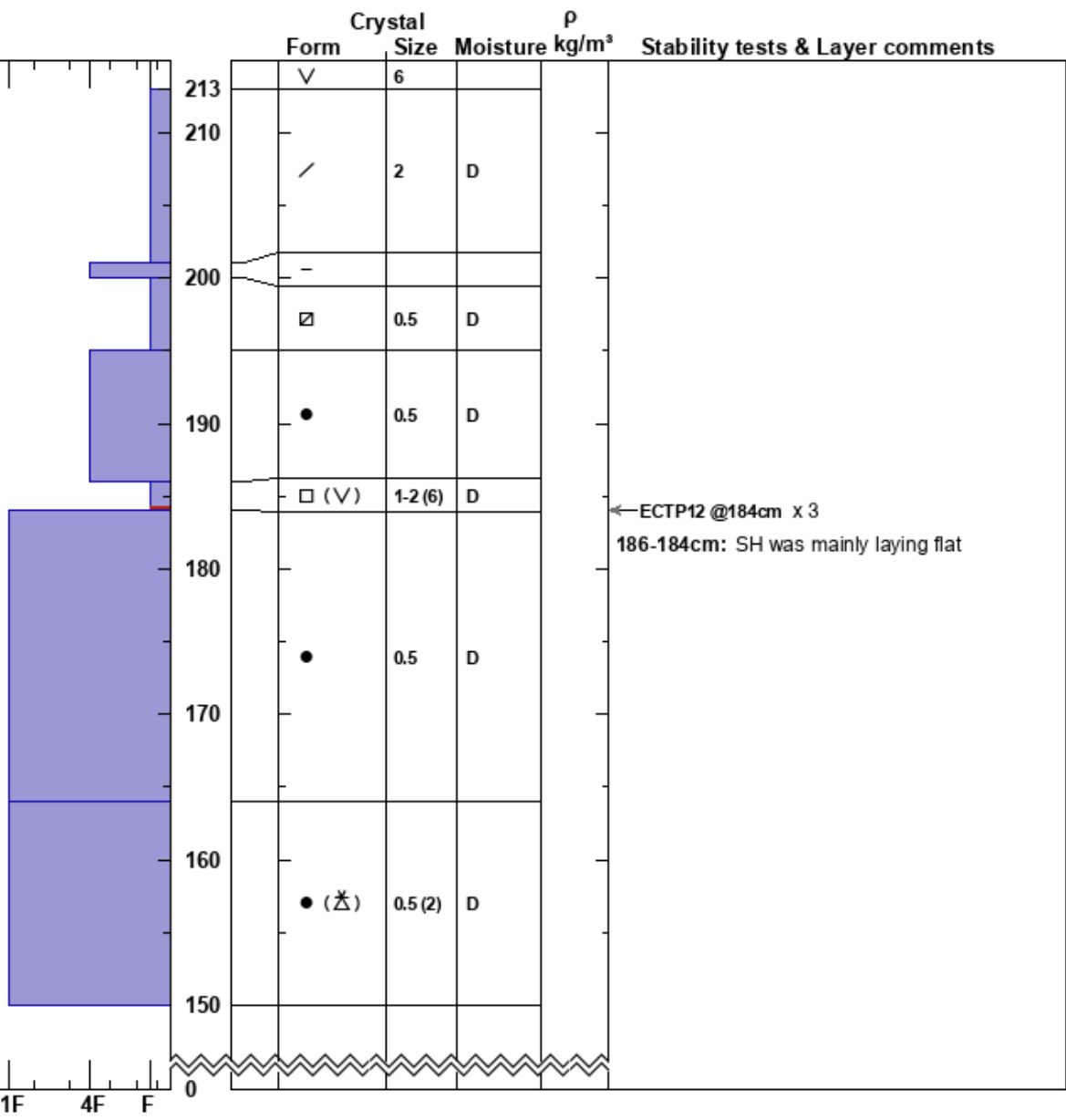


GM-Cliffs-Near-Surface
 Grand Mesa
 CO
 Elevation: 10612 ft
 Aspect: 350°
 Specifics:

Brandon Levy
 02/08/2023 - 1:00pm
 Co-ord: 12S 754370W 4326523N
 Slope Angle: 15°
 Wind Loading:

Stability:
 Air Temperature:
 Sky Cover:
 Precipitation:
 Wind:

HS:213
 Layer Notes:
 186-184cm: SH was mainly laying flat
 186-184cm: Problematic layer



Notes: I K P 1F 4F F