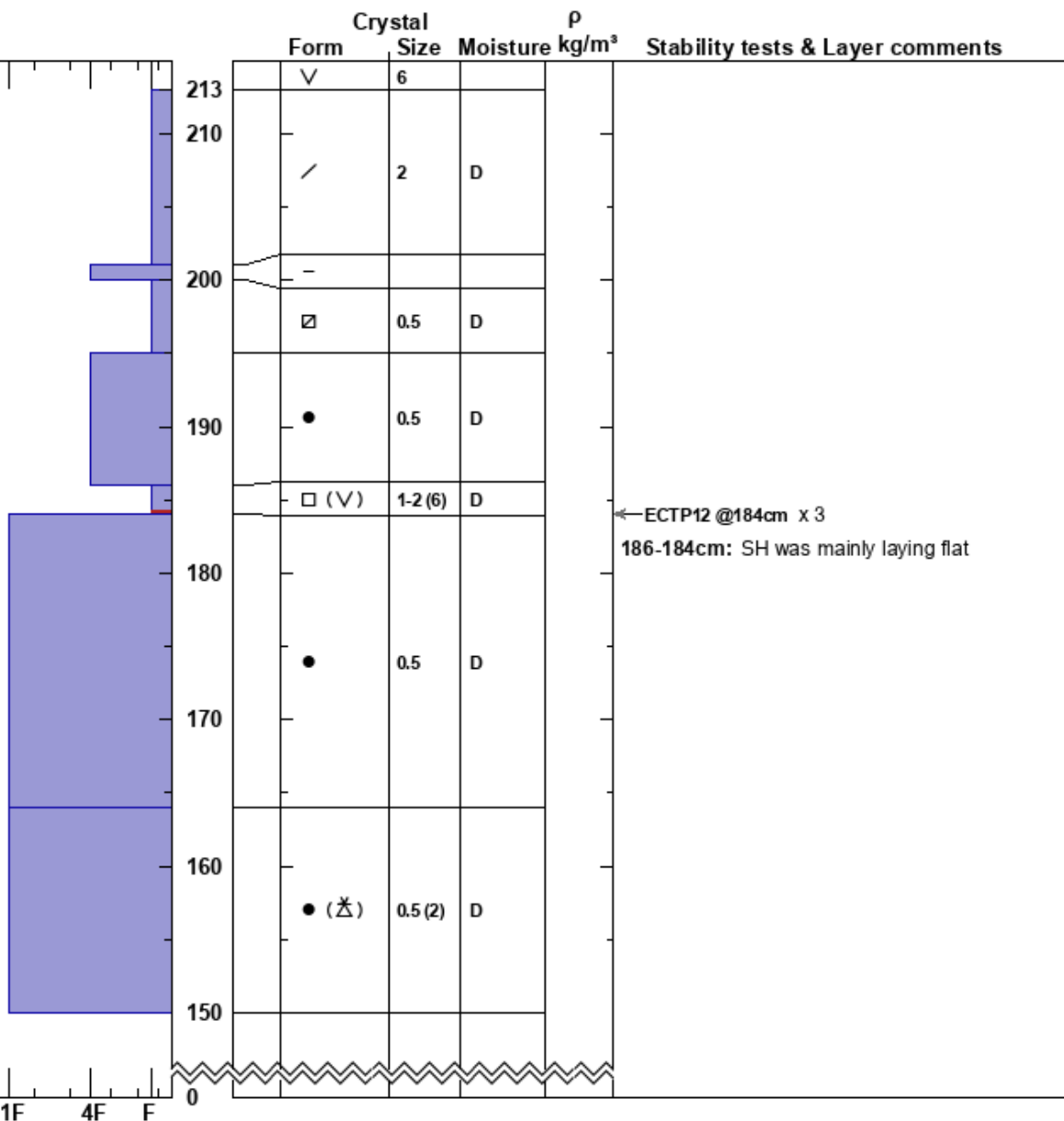


GM-Cliffs-Near-Surface  
 Grand Mesa  
 CO  
 Elevation: 10612 ft  
 Aspect: 350°  
 Specifics:

Brandon Levy  
 02/08/2023 - 1:00pm  
 Co-ord: 12S 754370W 4326523N  
 Slope Angle: 15°  
 Wind Loading:

Stability:  
 Air Temperature:  
 Sky Cover:  
 Precipitation:  
 Wind:

HS:213  
 Layer Notes:  
 186-184cm: SH was mainly laying flat  
 186-184cm: Problematic layer



Notes: