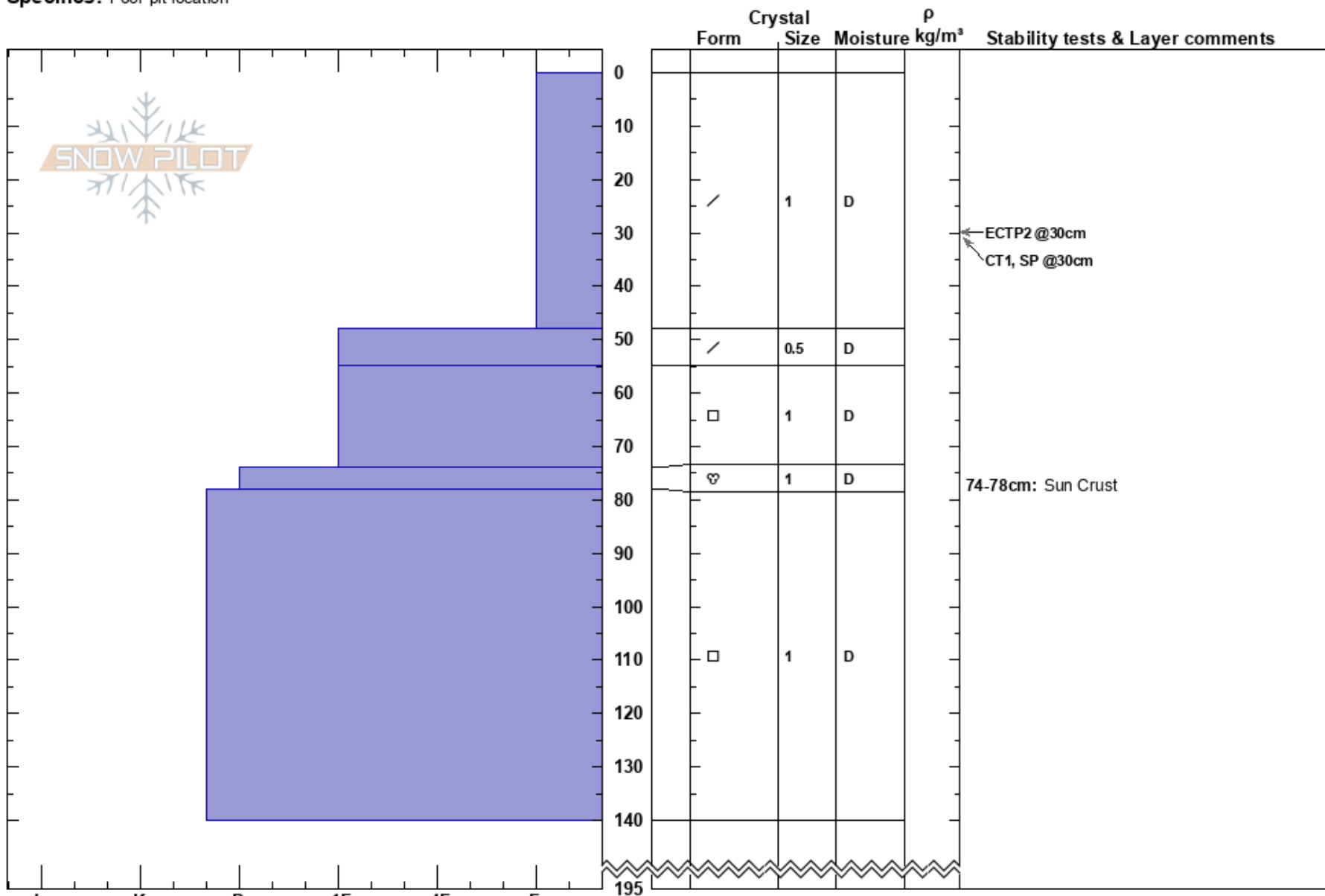


Illicelewet Approach
 purcell
 BC
Elevation: 1890 m
Aspect: SW
Specifics: Poor pit location

Scott MacDonald
 07/02/2017 - 13:35
Co-ord:
Slope Angle: 30°
Wind Loading: no

Stability:
Air Temperature: -14.7°C **HS:** 195
Sky Cover: SCT **PF:** 65
Precipitation: NO
Wind: Calm
Layer Notes:
 0-48cm: Problematic layer
 74-78cm: Sun Crust



Notes: Gully feature away from trees. Highly variable ground cover. Object is to test upper layers, especially HST.